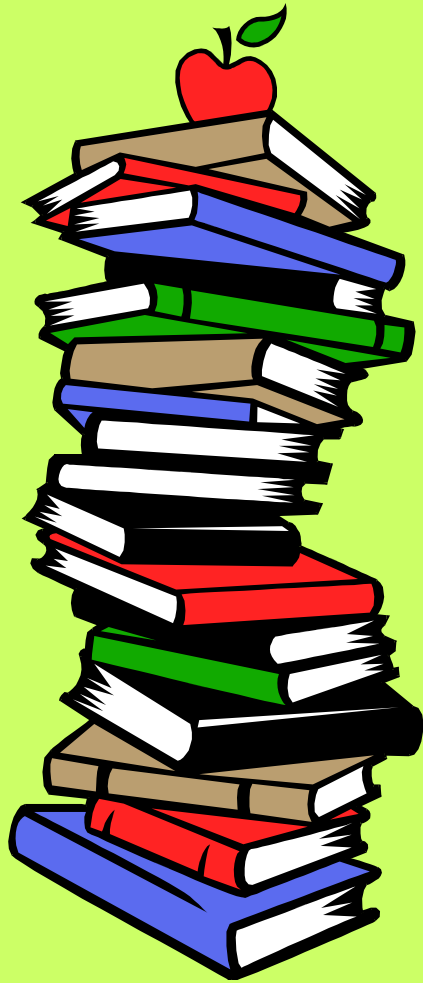




to  
Kindergarten at  
Allen Elementary





# Daily Schedule

- 7:50–8:00 GMA (Announcements)
- 8:00–8:40 Handwriting and Writer's Workshop
- 8:40–9:00 Calendar and Morning Message
- 9:00–10:30 Literacy, Reader's Workshop, Guided Reading
- 10:30–11:00 Lunch
- 11:00–11:30 Recess
- 11:30–12:10 Science and Social Studies
- 12:10–1:00 Specials
- 1:00–1:10 Snack
- 1:10–2:40 Math
- 2:40–2:50 Pack Up/Dismissal

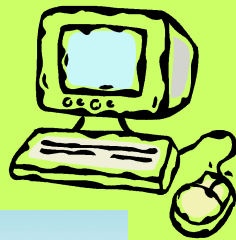
# Specials



Music (Mrs. Lozano)



Art (Mrs. Gaston)



Computers (Ms. Strange)



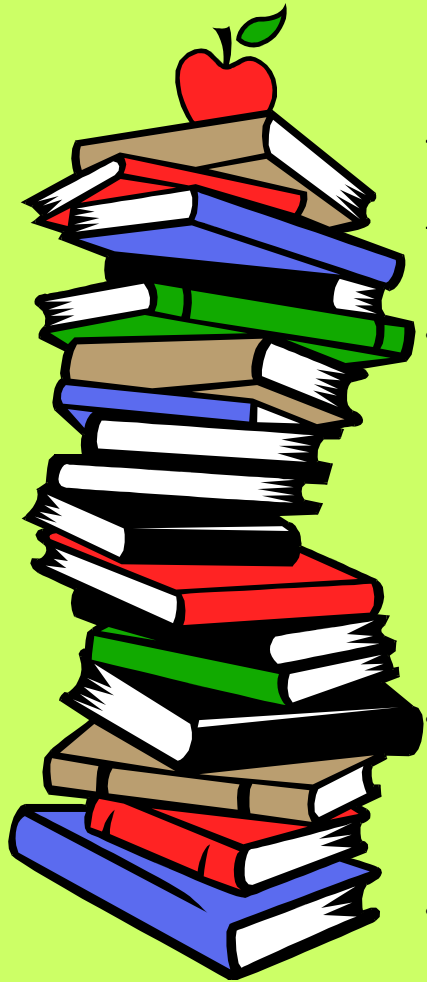
P.E.- Twice a week

(Coach Mac and Coach Davis)

**Don't forget to wear or bring tennis shoes on P.E. day!**

\* Class library visits are also regularly scheduled, but not considered a "specials" class.

# Language Arts



\*Literacy Centers are used daily for a hands-on, interactive learning experience.

\*Poetry is used weekly as a teaching tool for all areas of literacy.

- Phonological Awareness

- \*hearing, identifying, and producing rhymes

- \*hearing and identifying beginning, middle, and ending sounds

- \*hearing and indentifying short and long vowel sounds

- \*blending, substituting, and deleting sounds

- \*identifying syllables

- \*identifying chunks in words and word families

- Word Study

- \*upper and lower case letter identification and sound production

- \*sight words/high frequency words

- Writer's Workshop

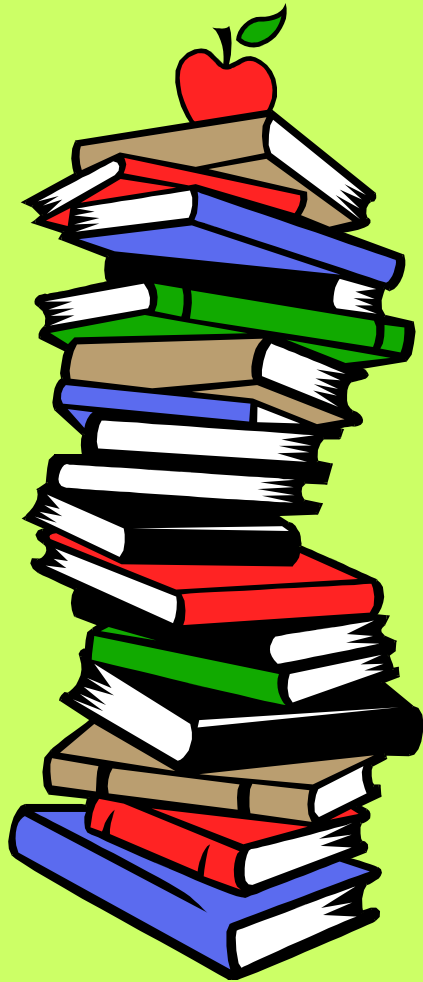
- \*Stages of Writing

- \* Writing Process

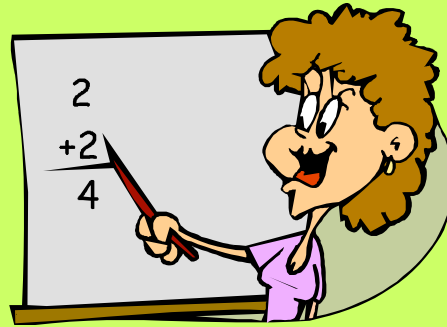
- \*The 6 Traits of Writing

- \*Handwriting Instruction 15 minutes daily using the Handwriting Without Tears method/style

# Language Arts



- Guided Reading
  - \*flexible grouping based on on-going assessments
  - \*books will be sent home daily (at least one book per week)
  - \*The same book may be sent home more than once to build students' fluency.
  - \*The cost for a lost guided reading book is \$10.00.
  - \*Literacy assessments will begin in mid September. Guided reading will begin in mid October once assessments are complete.
- Reader's Workshop
  - \*choosing a Just Right book
  - \*individual silent reading
  - \*buddy reading
- Reading Comprehension Strategies
  - \*Establishing Purposes for Reading
  - \*Retelling
  - \*Making Connections
  - \*Predicting and Inferring
  - \*Questioning
  - \*Mental Images and Visualization
  - \*Fiction vs. Informational Text



# Math

\*Daily calendar skills including:

\*yesterday, today, tomorrow    \*months of year, days of week    \*weather and graphing  
\*place value    \*skip counting    \*odd/even

\*Sort, describe, and compare attributes

\*Positional words and directions

\*Identify, describe, and compare 2-D and 3-D geometric figures

\*Identify, describe, and extend patterns

\*Number sense and counting orally

\*Problem solving/ word problems (UPS check)

\*Addition and subtraction (with manipulatives)

\*Non-standard units of measurement

\*Area, weight, capacity, and relative temperature

\*Money (coin identification and value)

\*Fractions (equal parts, whole, half)

\*Telling time (hour and half hour)

\* CBA (Content Based Assessments) will be given 6 times a year to assess your child's progress



# Science

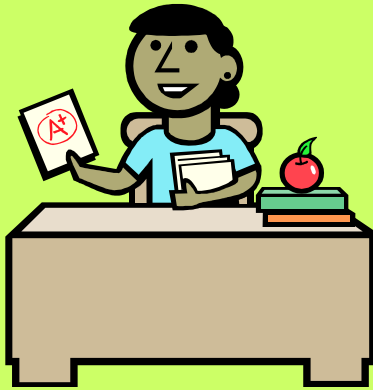


- \* Weather/Seasonal Changes
  - \* The Five Senses
  - \* Life Cycles of apples, pumpkins, plants
  - \* Living/Non-Living
  - \* Animals/ Farm
  - \* Earth and Sky, Day and Night Patterns
  - \* Plants, rocks, soil
  - \* Properties of water
  - \* How things move
  - \* Parts of a whole/ Simple Machines
  - \* Recycling
  - \* Demonstrate safe practices of science investigation
- \*PBA's (Performance Based Assessments) will be given 11 times a year.



# Social Studies

- School Rules/Procedures
- All About Me/Family
- Friends/Manners
- Community Helpers
- Patriotism/Citizenship
- Transportation
- Holidays/ Traditions
- Presidents/ Historical Figures
- Me and My State



# Grading

- **Academic checklists will reflect a child's academic performance and mastery of the TEKS.**
- **Academic Checklist Dates:  
Oct. 27, Jan. 19, March 29 , June 1**

# FISD Truancy Policies and Procedures

- When sickness or other obligation necessitates an absence, a note signed by the parent/guardian explaining the reason for the absence is required the day the student returns to school. If a student fails to submit a note, the absence will be considered unexcused. The student will be allowed three (3) days to submit a written note excusing an absence (an email is acceptable as a note). [Visit your campus website](#) for instructions and contact information for your attendance/data clerk. It is very important to send a note because the absence will be unexcused if a parent/guardian fails to provide a note within the specified time. Unexcused absences are what triggers the warning letters regarding violation of truancy laws and can lead to filing of failure to attend school charges.
- When a student's absence **for personal illness exceeds four (4) successive days**, the student shall provide a **statement from a physician or health clinic** verifying the illness or other condition requiring the student's extended absence from school
- **Exemptions to Compulsory Attendance**  
State law allows exemptions to the compulsory attendance requirements for several types of absences. These include the following activities and events:
  - Religious holy days;
  - Required court appearances;
  - Activities related to obtaining United States citizenship;
  - Service as an election clerk; and
  - Documented healthcare appointments, including absences for recognized services for students diagnosed with autism spectrum disorders.

# FISD Truancy Policies and Procedures Continued

- For **unexcused absences**, parents will be notified through mail and with a phone call, when their child has accumulated 5, 8, and 10:
  - unexcused or unresolved absences,
  - Tardies
    - \*The tardy bell rings and the security doors are shut at 7:50am.
    - \*Students arriving at after 7:50 must get a tardy slip from the front office.
    - \*If a student is tardy 10 or more times in a 6 month period or 3 or more times in a 4 week period, a “failure to attend school” action will be filed with a judge.
  - missing parts of a day or leaving early
- Should unexcused absences continue to occur after the ten day letter is sent, a request for citation will be filed in Truancy Court.
- Absences such as non-school related **vacations and trips**, babysitting, working (including modeling), and non-school sponsored athletic events and programs shall be considered **unexcused**. If a student is going to be absent more than ten consecutive days, the student shall be withdrawn on the tenth day.
- If a family does plan a vacation, an Absence Request form is available for you to complete. All requests for vacations will be unexcused and will be documented as requested absences.
- Finally, for students to meet **Compulsory Attendance** they must attend 90% of the school year. If a student misses 18 days of school or more, an Attendance Committee will meet to determine promotion to the next grade level.

# Allen Expectations

- Take good care of yourself.
- Take good care of others.
- Take good care of this place.



# Empowered and Responsible Students!

- Our Allen discipline philosophy is grounded in building and maintaining positive relationships with students.
- We have three “Allen Expectations” for students – take good care of self, others, and this place.
- Teachers use “Teaching Principles” for how they will manage the class. There are nine principles shared with students and posted in each classroom.
- Each student will be treated with respect, caring, empathy and dignity.
- Equal isn’t always fair and fair isn’t always equal; teachers will be fair in discipline situations taking into account each student and each unique situation.
- When a student makes a choice that becomes a problem for themselves or someone else, she has an opportunity to think about that choice and solve the problem.
- We view problems as learning opportunities. More emphasis is on learning from mistakes or problems – or better choices to make - than on the problem.

# Empowered and Responsible Students!

- Home problems are solved at home. School problems are solved at school.
- Sometimes we may need your help. A child may need to spend some time at home to think about and come up with a plan to solve a problem she is causing at school. We increase a child's confidence each time we lovingly provide her the opportunity to build responsibility and problem solving skills. Message: "YOU CAN DO IT!"
- Role models are powerful! Parents and teachers model and encourage positive choices every day – our children are always watching and listening.
- Thank you for your trust and sharing your children with us! We look forward to a great partnership!
- For more information, please see [www.loveandlogic.com](http://www.loveandlogic.com).

# Consequences for Violation of School Bullying/Harassment

Bullying can take many shapes and forms. In addition to being physical, bullying can also be verbal and psychological in nature. Bullies may: taunt, ridicule, make offensive comments to their classmates, spread rumors, play mean jokes on peers, intentionally leave other children out of activities, write nasty things about classmates, persuade peers to reject other children, intimidate or threaten others, take or damage others property, hit, push, trip, kick, or pinch other children.

- **Level 1** – Verbal reprimand and warning of future consequences by teacher in the building accompanied by a phone call . The third level 1 classroom offense will result in a level 2 consequence and a referral to the Assistant Principal for discipline and the Counselor for counseling.
- **Level 2** – Time out and a removal from some privilege, referred to the Assistant Principal, name given to the Bully Prevention Task Force and teachers are notified (on a need to know basis), counseling session and parents contacted.
- **Level 3** – ISS,OSS, refer to law enforcement officials (when necessary) and ongoing counseling



# Reminders



- Check and your child's BLUE FOLDER each day.
- Check your child's BLUE FOLDER on Thursdays for important information.
- Help your child practice tying his/her shoes, opening lunch/snack containers, and saying his/her first and last name.
- Read to and with your child daily (guided reading books and other books of interest).

# Let's Wrap It Up!!!



- Sign up for a conference time
- Questions 😊
- Thanks For Coming!